

Ampeg[®]

Liquifier Analog Chorus

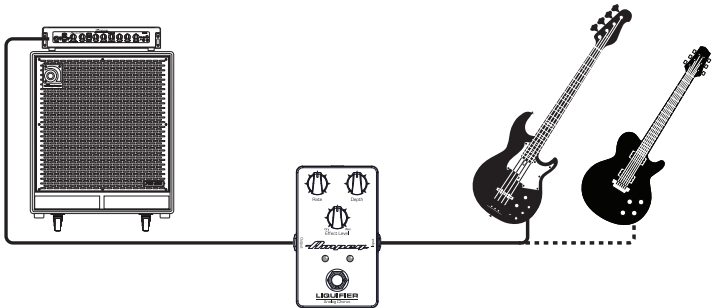
Quick Start Guide

What's in the Box

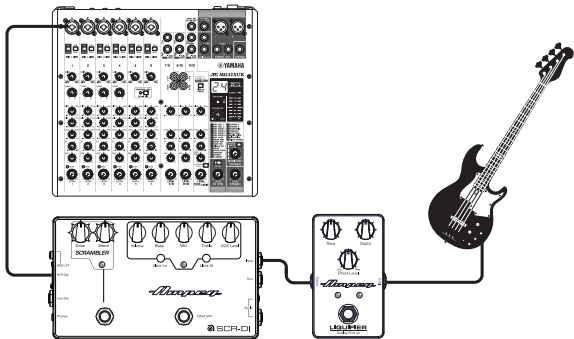
Liquifier Analog Chorus Pedal, Quick Start Guide.

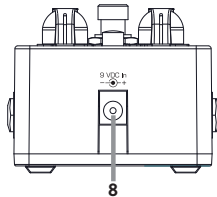
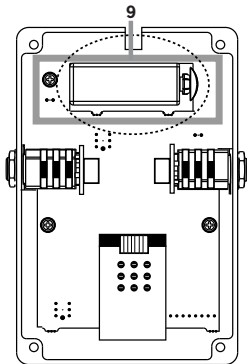
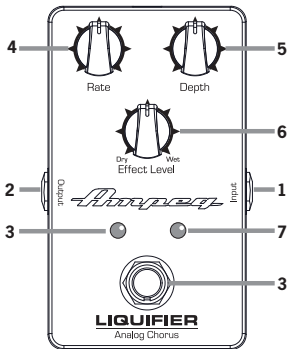
Hookup Diagrams

Standard
Setup



PA/Recording
Setup





Front, Rear, Side and Bottom Panel Descriptions

1. **Input:** Connect a passive or active instrument to this Input jack.
2. **Output:** Feeds the signal to an external power amplifier, mixer, or recording setup.
3. **On/Off Switch:** Turns the pedal on/off. The LED indicates on/off status.
4. **Rate:** Adjusts the speed of the low-frequency oscillator (LFO).
5. **Depth:** Adjusts the amplitude / intensity of the rate.
6. **Effect Level:** Adjusts the overall effect level.
7. **Rate Indication LED:** This LED flashes to indicate the current rate.
8. **Power:** Input socket for optional AC/DC power supply.
9. **Battery (not included):** Provides 9V of power (accessible by removing the four screws on the bottom panel).

Getting Started

1. Read and understand the included "Important Safety Instructions."
2. Make all initial connections with the power switches OFF on all equipment. Make sure the Master Volume, Level and Gain controls are all the way down.
3. Insert 9V battery or connect optional AC/DC power supply. The Liquifier Analog Chorus may accept the appropriate voltage as indicated on the rear panel.
4. Connect an instrument to the Input jack with a 1/4" (shielded) instrument cable.
5. While playing the instrument, adjust the Rate, Depth and Effect Level knobs to taste.

Technical Specifications

Signal-to-Noise Ratio (Effect Level @ 12:00)	82 dB
Maximum Gain	+0 dB (Unity)
Power Requirements	Internal: 9V Battery External: 9V DC, ≥60mA
Size (H x W x D)	2.2 x 2.6 x 4.5 in 56 x 66 x 114 mm
Weight	0.6 lb / 0.3 kg

All specifications subject to change

© 2019 Yamaha Guitar Group, Inc. All rights reserved.

Ampeg and the Ampeg logo are trademarks or registered trademarks of Yamaha Guitar Group, Inc. in the U.S. and/or other jurisdictions.

Ampeg[®]

WARRANTY AND SUPPORT

Visit **WWW.AMPEG.COM** to...

- (1) ...identify **WARRANTY** coverage provided in your local market. Please keep your sales receipt in a safe place.
- (2) ...retrieve a full-version, printable **OWNER'S MANUAL** (English only) for your product.
- (3) ...**REGISTER** your product.
- (4) ...**CONTACT** Technical Support, or call 818-575-3600.

www.ampeg.com
Yamaha Guitar Group, Inc.
26580 Agoura Road, Calabasas, CA 91302-1921 USA
Part No. 40-00-0528 Rev. A

